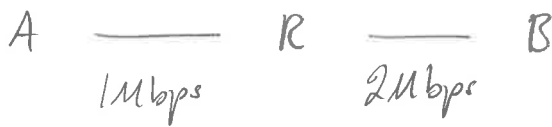
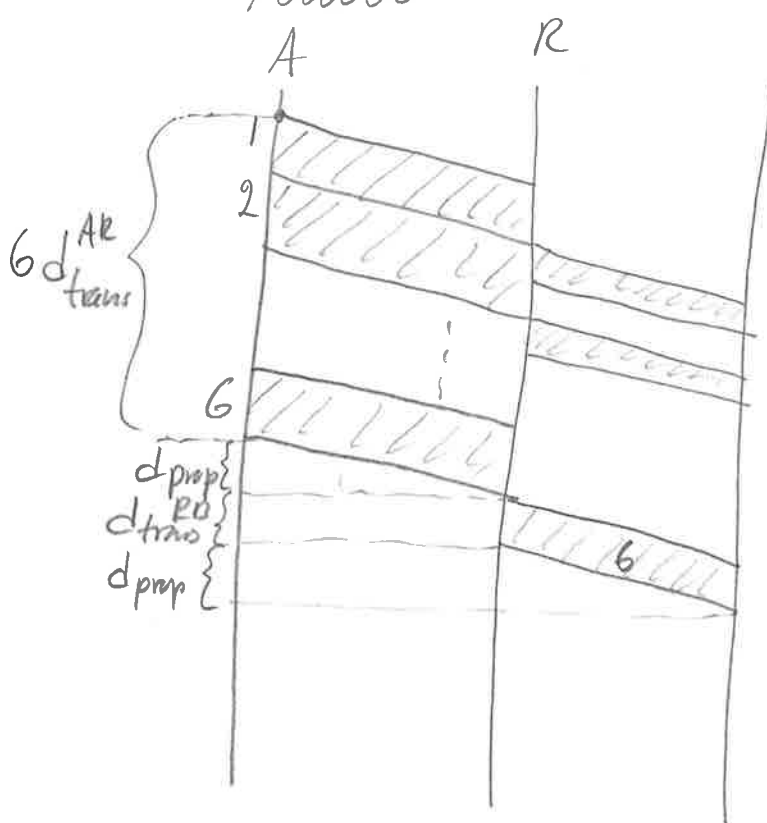


Öppning 1)



a) $\frac{1200}{1000000} = 1,2 \text{ ms} = d_{\text{trans}}^{AR}$; $d_{\text{trans}}^{RB} = 0,6 \text{ ms}$



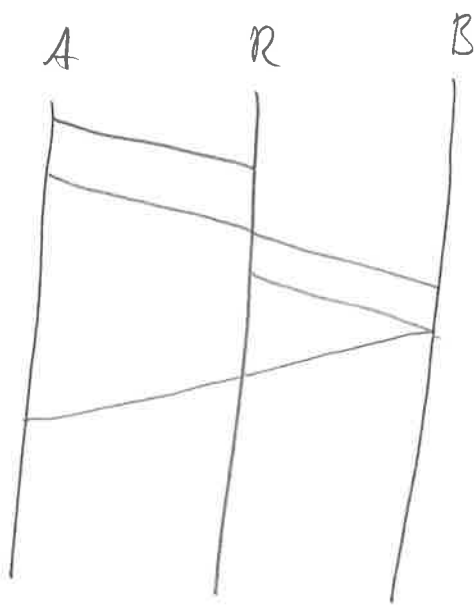
hur lång tid R har fått alla paket $6 \cdot 1,2 + 1 = 8,2 \text{ ms}$

Totalt $8,2 + 0,6 + 1 = 9,8 \text{ ms}$.

b) $\frac{6200}{1000000} = 6,2 \text{ ms}$ 3,1 ms

$6,2 + 1 + 3,1 + 1 = 11,3 \text{ ms}$

c)



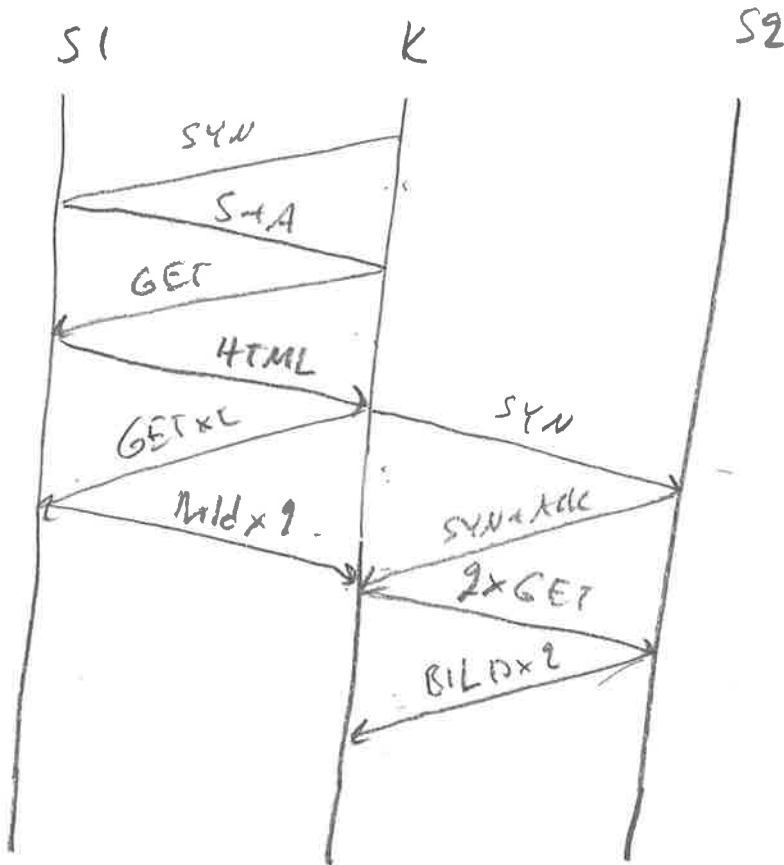
(2)

$$1,2 + 1 + 0,6 + 1 + 1 + 1 = 5,8 \text{ ms.}$$

$$5,8 \cdot 5 + 3,8 = 25 + 4 + 3,8 = 32,8 \text{ ms.}$$

5 första paketerna Sista paketet

Uppgift 2

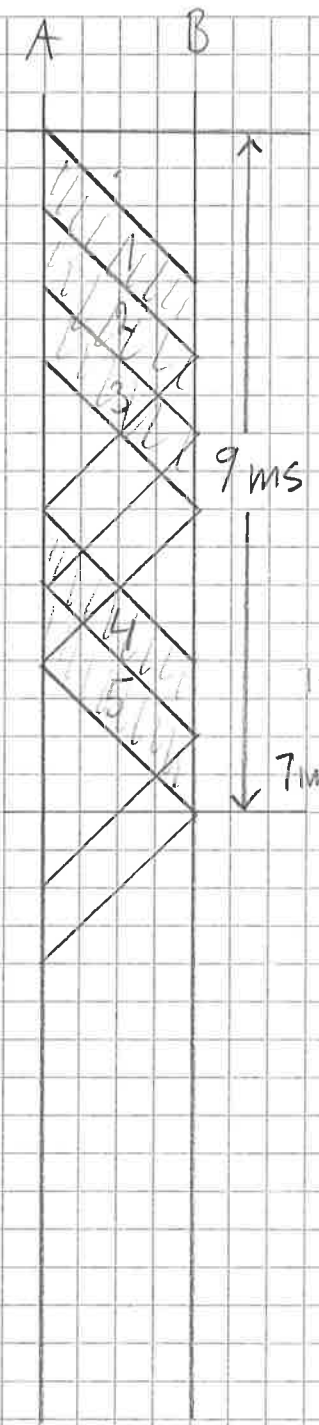


Med
HTML-bit
och
tre bilder

Med
två
bilder.

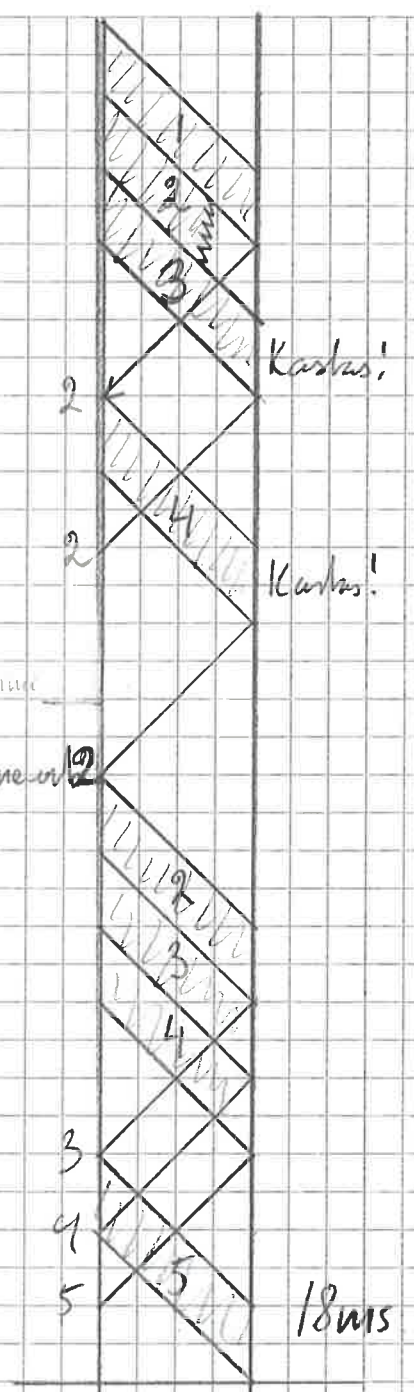
Uppgift 6) a)

3



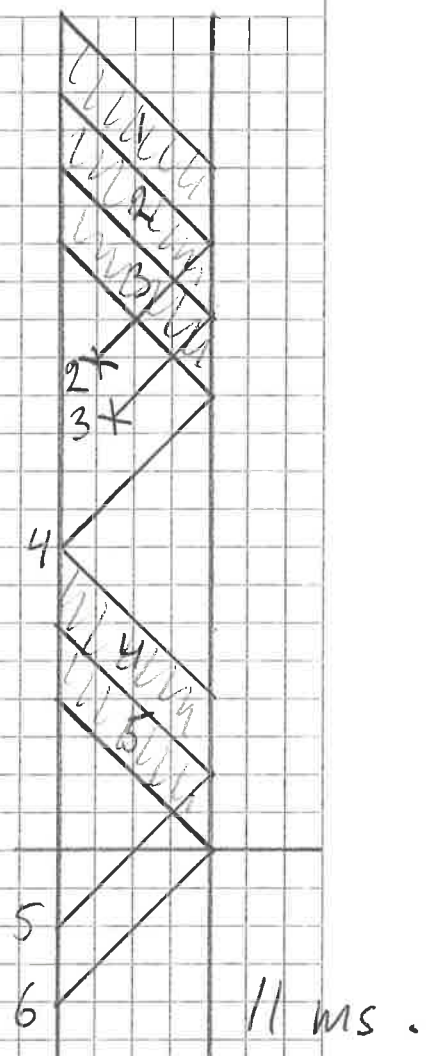
9 ms

b) A B



18 ms

c) A B



11 ms